

# DencoSalesTechnicalServices Tech Notes.

## Edge FX Lubrication

What: Lubrication of the cassette carriage, cassette pins, Z-axis lead screw, etc.

Why: Chattering noise that occurs when the cassette carriage moves down and up.

This can also lead to color to color registration problems.

What you will need:

- 2.5mm Allen Wrench
- 3mm Long Allen Wrench (Ball end is best)
- Synthetic Grease
- 3 in 1 Oil
- Cleaning Swabs (Fingers will do, but I don't recommend it.)

How: Throughout this procedure, you will be raising and lowering the cassette carriage. To do so, follow these simple instructions. (This takes you into menus and functions that can adversely affect print quality. Do not press any buttons that are not specifically mentioned in these instructions.)

- Make sure the Edge is Offline
- Press F2 + F4 at the same time to enter the Manufacturing Menu
- Press Next 3 times to get to Manufacturing Menu 4
- Press F1 (Z-Axis)
- Press the < (left slew button) to lower the cassette carriage and > (right slew button) to raise it.
- When you are finished, press F3 to cancel out of the Manufacturing Menu.

Now, on to the good stuff -

1. Remove the foil caddy
2. Raise the cover
3. Using the instructions above, lower and raise the cassette carriage a few times to identify the points that rub or slide against. You will probably notice more "chatter" when the carriage is moving back up. Leave the carriage in the up position.

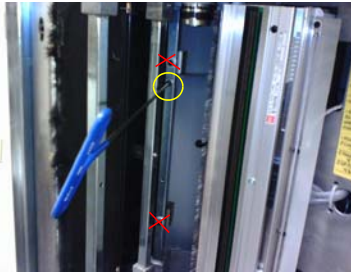
4. Remove the covers:

- a. Using the 3mm Allen Wrench, remove the three screws holding in the black cover around the caddy slot. (Note that the longer one goes in the bottom when you put it back together.)

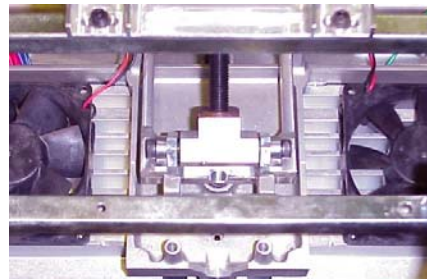


- b. Using the 2.5mm Allen Wrench, remove the two round head screws from the back, top cover.

- c. Open the lid and using the 3mm long handled Allen Wrench, remove the screws indicated in the pictures below. The right side will be the hardest one to reach - this is where the long handle and ball end really come in handy - especially when you go to put the cover back on.

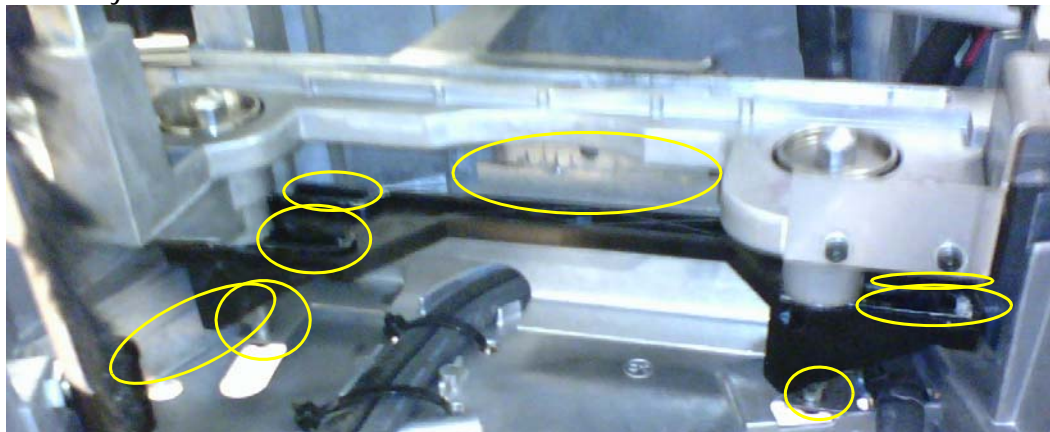


5. With the covers off and the lid down, look down at the top and you'll see the Z-axis lead screw and lead screw nut. As you press the slew keys you'll see the lead screw turn which raises and lowers the printhead and carriage assembly. Make sure that you do not run the printhead down into the platen - damage to the printhead can occur.



Using a cleaning swab, apply a small amount of synthetic grease along the exposed length of the lead screw, then using the slew keys, run the lead screw back and forth a few times to spread the grease.

6. Now lift up the lid and apply synthetic grease (sparingly) to the friction points on the carriage assembly.



7. With the cassette carriage in the down position, the foil pins are exposed. Put one drop of 3 in 1 oil on each pin.
8. Run the carriage up and down at least 10 times (with the cover open) to distribute the grease and oil.
9. Replace the covers and you're back in business.



One drop only  
each side.

Please call if you have any questions.