

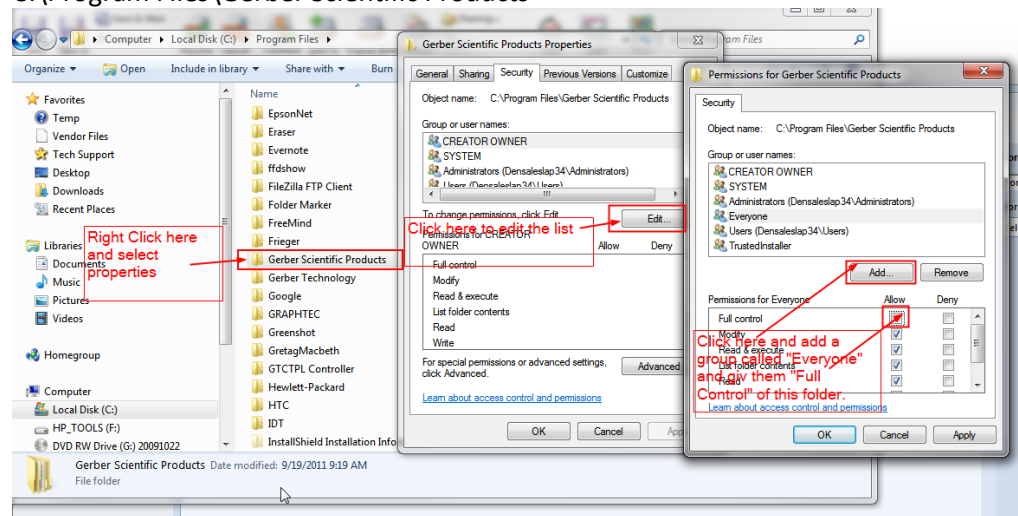
Installing Omega on permission restricted computers.

What and Why?

Many large institutions have security requirements that limit normal users' access to certain areas of the computer system. This can restrict Omega software from being able to modify or access files that are needed for daily productivity when a user with less than Administrative rights is logged in and running Omega.

HOW:

1. Install Omega 5.0 with default locations under the admin login.
2. Find the following folders and have the admin change security
 - a. C:\Program Files\Gerber Scientific Products



- b. Do the same for: C:\ProgramData\Gerber
3. In Regedit, "HKEY_LOCAL_MACHINE\SOFTWARE\Gerber" and "HKEY_LOCAL_MACHINE\SOFTWARE\Gerber Scientific Products", Right click on the keys and select permissions and add a group as above called "Everyone" and give "Full Control"
4. Make sure that the location of saved jobs is also permitted to be edited by everyone using the Gerber Software.
5. Anti-virus and Firewall applications need to be configured to ignore Omega.
6. Verify that this will work for everyone by rebooting the computer, log in as the normal user (log in with as many user's as possible that will be using Omega) and make sure that they are able to open files, save files, output jobs, etc. successfully and without any error or warning messages.