

CHX SLIMLINE AND HIGH OUTPUT STRIPLITES

Slimline and High Output Striplites are ideal for maximum illumination in retail stores and commercial environments. Striplites are available in 4', 6', and 8' individual lengths as well as continuous row mounting.

Housing: High-gloss, baked white enamel finish on steel housing with removable wireway access panel. See back cover for post paint color options. Fixture is shipped fully wired and assembled. CHX models have patented (#4,422,132) flip-up socket bar and turn fastener for attaching wireway cover. OAH aluminum housing has longitudinal ribs for rigidity. Ample knockouts provided.

Options: Options include modular wiring, electronic ballasts for better sound rating, and OLS polycarbonate tube guards for cold or food area operation.

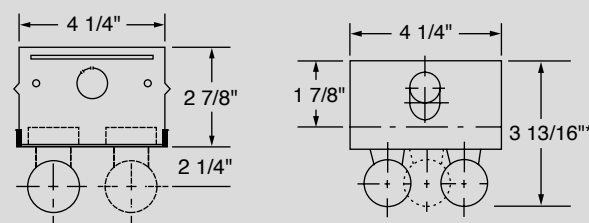
Electrical: Fully wired for 120V, 60 Hz AC operation with ETL-CBM, thermally protected, automatic resetting, energy saving, Class P, high-power-factor ballast, unless otherwise specified. Sound rated A ballast, except slimline and high-output models. CHX and OAH models are U.L. listed, damp location.

Mounting: Combination end plate/joiner connects units for continuous row or wire through. Heavy duty joiner plate #30-21602 available for steel CHX models. Optional plug-in wiring system described in detail on page 62. Surface or pendant mount, high output model must be suspended at least 6" from ceiling for cooler operation.



OAH Aluminum Series

CHX Steel Series



* HO, VHO, SHO and PG are 4 5/8" deep

Photometric Data 2-96" Model

CANDLEPOWER				LIGHT GUIDE (T12 LAMPS AND MAGNETIC BALLAST)				COEFFICIENT OF UTILIZATION								
Angle	0	45	90	Footcandles	Sq. ft. per fixture in a large room with 8' to 10' ceilings.		RC RW RCR									
	2242	2242	2242		CHX296		CHX296HO		80	70	50	30	80	70	50	30
0	2242	2242	2242	35	201	297	1	93	88	84	89	85	80	77	74	
5	2212	2242	2254	50	140	207	2	84	76	69	80	72	66	66	61	
15	2132	2224	2294	75	94	139	3	76	66	58	72	63	56	58	52	
25	1972	2184	2334	100	70	104	4	69	58	50	66	56	48	51	45	
35	1744	2092	2328				5	63	51	42	60	49	41	45	38	
45	1446	1954	2252				6	58	45	37	55	43	35	40	33	
55	1100	1748	2094				7	53	40	32	50	39	31	36	29	
65	714	1484	1812				8	49	36	28	46	35	27	32	25	
75	334	1134	1476				9	45	32	24	43	31	24	29	22	
85	56	698	1008				10	42	29	22	40	28	21	26	20	
90	6	572	886													
95	2	668	1020													
105	0	564	922													
115	0	452	772													
125	0	338	602													
135	0	226	430													
145	0	124	266													
155	0	34	116													
165	0	0	6													
175	0	0	0													
180	0	0	0													

AVERAGE LUMINANCE				LIGHT DISTRIBUTION			
CD/SQ.M				Zone	Lumens	%Lamp	%Fixture
Angle	0	45	90	0-30	1846	14.7	16.1
45	7740	8619	9021	0-40	3144	24.9	27.4
55	7212	8407	9294	0-60	6127	48.6	53.5
65	6284	8511	9334	0-90	9309	73.9	81.3
75	4688	8491	9397	0-180	11453	90.9	100.0
85	2096	7672	8748				

Lamps = (2) F96 T12 @ 6300 lumens ea. Input Watts = 157.3 Test #00722
Ballast = Magnetic 120 V S/MH = 1.2

INDUSTRIAL & STRIPLITES

Ordering Information

CHX	2	96	HO	PL1BK	120V	
SERIES	# LAMPS	LAMPS	BALLAST	SPECIAL HOUSING	PLUG-IN SYSTEM	VOLTAGE
CHX - Slimline/HO	1 - Single	48 - 48"	B5 - Electronic T12	20G - 20 gauge steel housing, certain models	Circuit wired to black: 1BK - 1 circuit, 2 wires	120
OAH - Aluminum	2 - Double	72 - 72"	B11 - Electronic T8	Accessories, reflectors and wire guards, see pages 58 - 63	2BK - 2 circuit, 3 wires	277
Slimline/HO etc.	3 - Triple	96 - 96"	E1 - Magnetic T12	Consult factory for three-lamp models 396	3BK - 3 circuit, 4 wires	
OCH - Low	4 - Four		HO - 800mA	DEEP - 2 3/4" deep housing, overall 4 5/8"	Circuit wired to red: 2RD - 2 circuit, 3 wires	
Temp/Powder Coat	21 - Tandem Two Lamps		LT - Cold Weather 0° (High Output - 20°)		3RD - 3 circuit, 4 wires	
			PG - For use w/ T17 power groove		Circuit wired to blue: 3BL - 3 circuit, 4 wires	
			VHO - 1500mA			